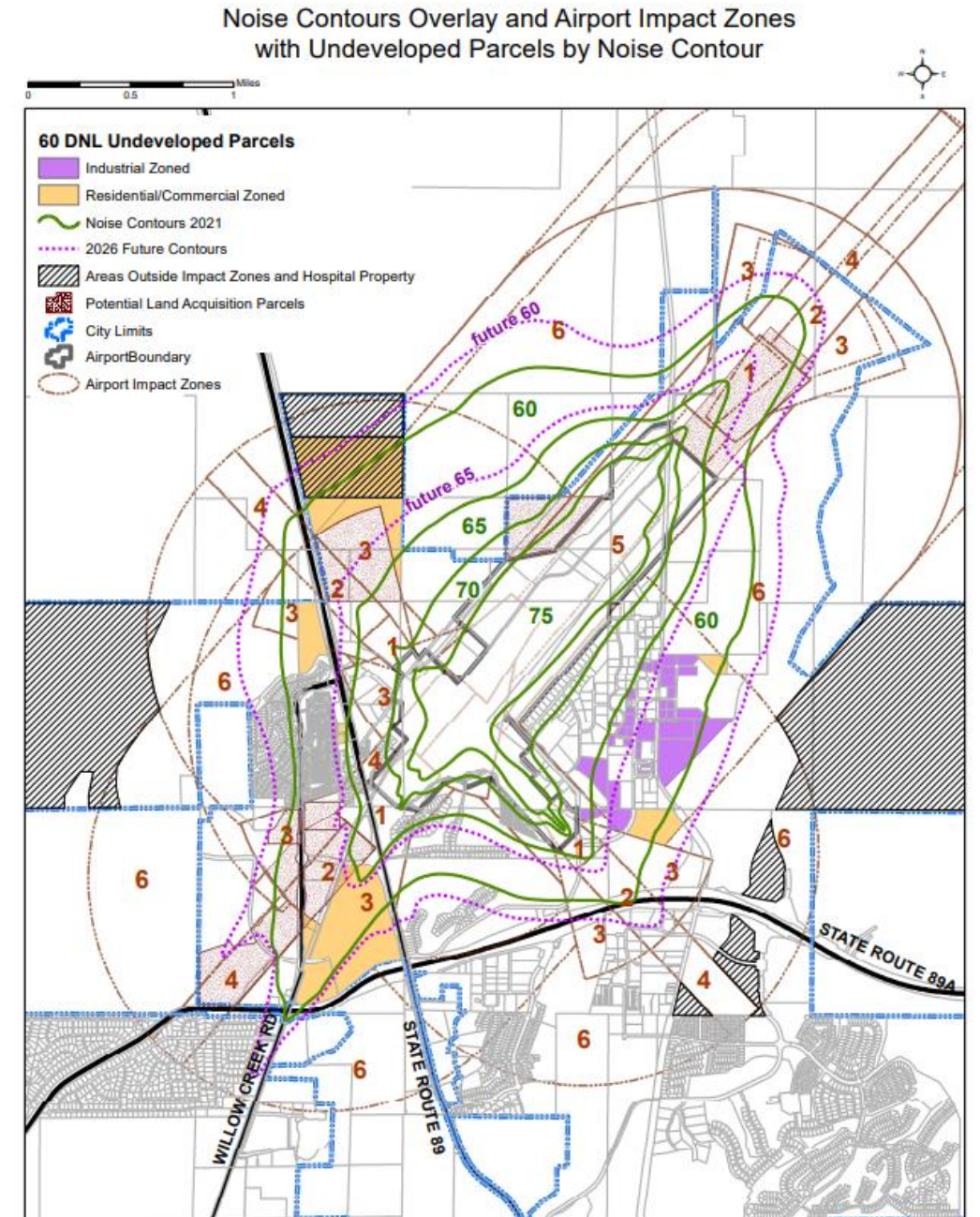


# AVO Additional Options: Option 1

- **Option 1 – “Least Protective/Restrictive”**

- **Approach:** Impact Zones (AIZ) + Most Recent 2021 Contours
- **Residential, Hospitals, Sensitive Uses:** Permitted in **AIZ 6** but outside the 60 DNL (2021) Contour.
- **Hotel/Motel and Correctional Facility:** Permitted in **AIZ 6** but outside the 65 DNL (2021) Contour.

*Sensitive Uses: Large Gathering Venue, Library, Day Care/Preschool, Social Club, Place of Worship, RV Park, Convention Center.*



# AVO Additional Options: Options 2 & 3

## Option 2 – “Moderately Protective/Restrictive”

- **Approach:** Impact Zones + [Future \(2026\) Contours \(w/ Hospital accommodation\)](#).
- **Residential, Sensitive Uses** (*Large Gathering Venue, Library, Day Care, Preschool, Social Club/Lodge, Place of Worship, RV Park, Convention Center*) **PLUS Hospital, Hotel, Correctional Facility:** Permitted only in **AIZ 6** but outside the [Future \(2026\) 60 DNL](#) Contour.
- **Yavapai Hospital North Accommodation:** Hospital & Medical/Residential to be accommodated with the [60 DNL 2021](#) Contour.

## Option 3 – “Moderately Protective/Restrictive” with DWR Exceptions

- **Approach:** Option 2 with *Exceptions for DWR Existing Annexed Areas:*
  - **Residential, School and Sensitive Use – Contour Level Exception.** Permitted only in **AIZ 6** but outside the [Future \(2026\) 65 DNL](#) Contour.
  - **Impact Zone 3 “South Skirt” (Commercial RWY) Selected Sensitive Use Exception:** *Mixed use, rentals, commercial, hotels/motels, RV park (short stay)* **allowed in Zone 3 South Skirt** but outside the [Future \(2026\) 65 DNL](#) Contour.

Noise Contours Overlay and Airport Impact Zones with Undeveloped Parcels by Noise Contour

