

**I am a merchant.
What part of the ordinance affects me?**

City Code prohibits the use of sidewalks and right-of-way for business purposes, with the following exceptions:

Sidewalk sales are allowed for an adjacent business only. All merchandise and associated equipment for a sidewalk sale must provide a minimum of 48 inches of unobstructed travel on the sidewalk and must be placed closer to the business than the curb or outside edge of the sidewalk.

Merchants may only place tables, benches and chairs on a sidewalk adjacent to their business. Tables and chairs may remain outside only when the business is open. All tables, benches and chairs must be kept in a clean condition and in a good state of repair. Unsightly conditions (such as accumulation of dirt, debris, breakage, rotting, crumbling, cracking, peeling, or rusting) are prohibited. A minimum of 48 inches of unobstructed travel on the sidewalk must be provided. Any tables and chairs must be placed closer to the business than the curb or outside edge of the sidewalk. All furniture must be made of metal, wood or a combination, unless the furniture is in downtown Prescott, where all furniture placed in the right-of-way must be constructed of black metal or iron to be compatible with existing downtown furnishings. Outside umbrellas associated with tables or benches are prohibited in the public right-of-way downtown.



What does the City consider downtown?

Downtown Prescott is defined as the area bounded inclusively
On the south by Carleton Street,
On the east by Marina Street,
On the north by Sheldon Street
and
On the west by McCormick Street



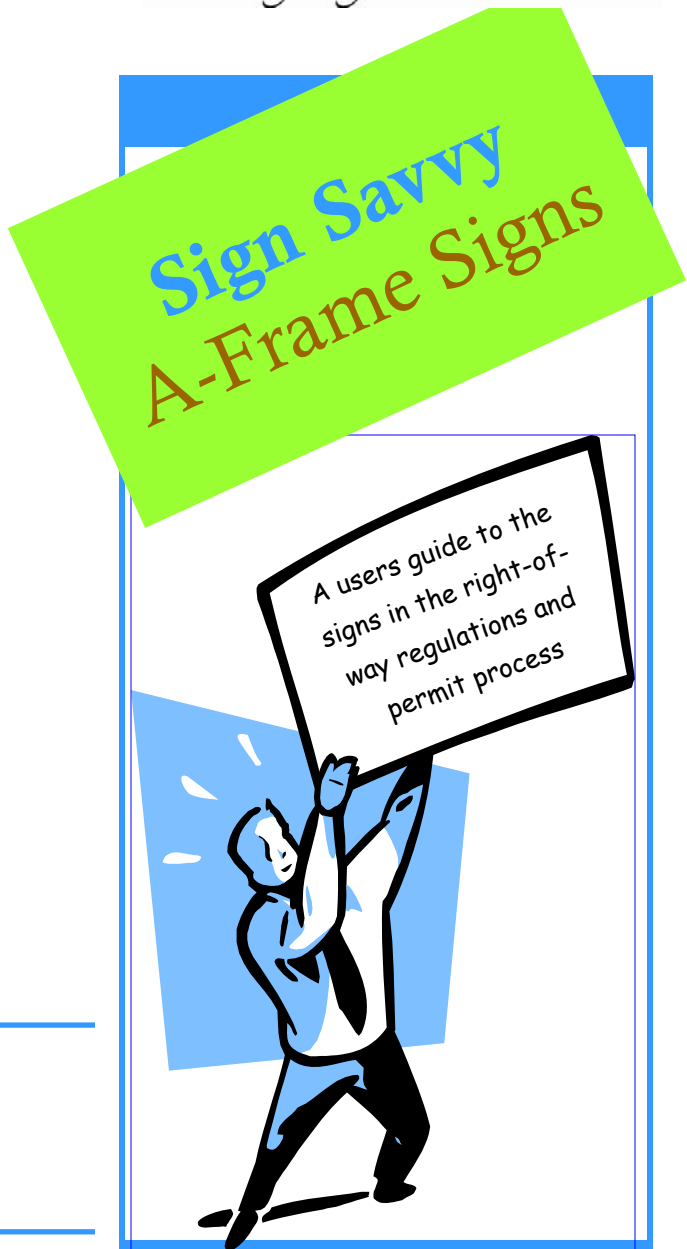
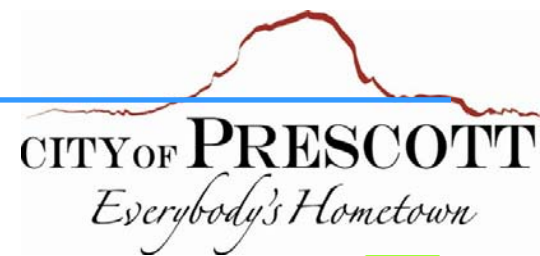
Code Section

Prescott City Code

Title VIII, Chapter 2 and Chapter 6

For more information please contact
the City of Prescott
Community Development
928-777-1207
To purchase a permit, stop by
City Hall
201 S. Cortez Street

Revised 6/15/2010



WHAT IF I WANT TO PUT A SIGN IN THE FRONT OF MY BUSINESS?

Sandwich signs (a-frame) are allowed, subject to the following limitations and conditions:

They may be outside of a business which operates on a continuing basis at a permanent location, when the business is open to the public, and when the sign is placed in the right-of-way by or on behalf of that business.

They may be no more than 50 inches high and 31 inches wide, including all structures or objects upon which the sign is placed or located together with anything affixed or attached thereto.

All sandwich signs must be kept in a clean condition and in a good state of repair.



Unsightly conditions, including but not limited to, the accumulation of dirt, debris, breakage, rotting, crumbling, cracking, peeling or rusting, and any other similar condition of disrepair or deterioration is prohibited.

Only one sandwich sign is allowed in front of any one property at any one time.

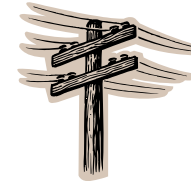
Sandwich signs placed on a sidewalk must allow a minimum of 48 inches of unobstructed travel on the sidewalk. Signs must be taken in each night.

In downtown Prescott, sandwich signs must be placed closer to the curb or outside edge of the sidewalk.



The following signs are prohibited:

- Any sign emitting sound,
- containing light bulbs,
- balloons, or
- signs with intermittent or flashing illumination,
- or animated or moving signs.



No signs may be located within a street, public trail, city planter, roadway or other thoroughfare, nor may any sign be affixed to a tree, traffic sign, traffic control device or utility pole.

