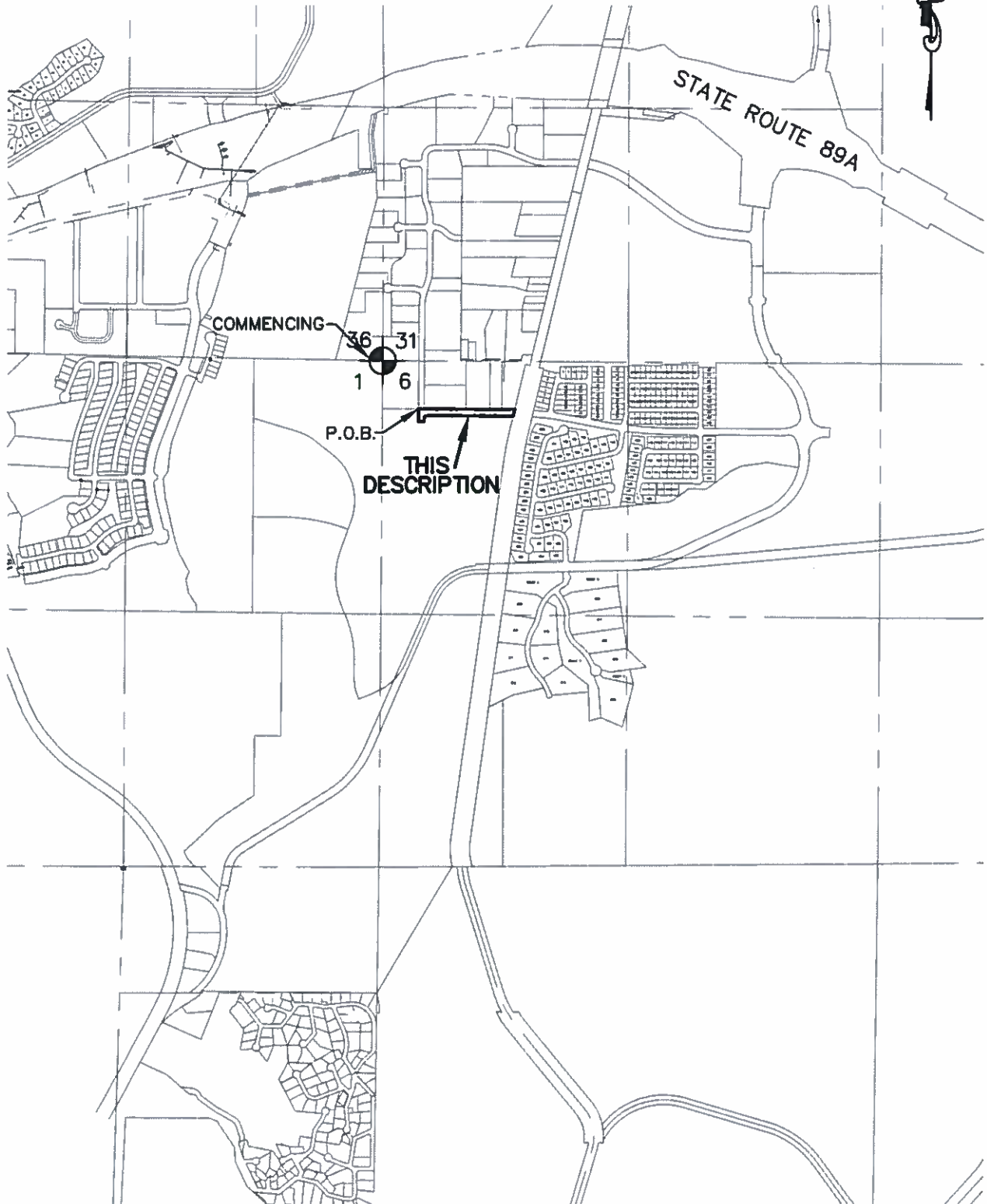


EXHIBIT 2F
MAP TO ACCOMPANY
LEGAL DESCRIPTION



**EXHIBIT 2F
LEGAL DESCRIPTION**

All that portion of land lying within Section 6, Township 14 North, Range 1 West, of the Gila and Salt River Base and Meridian, Yavapai County, Arizona, more particularly described as follows:

(The basis of bearings for this description is North 89°36'53" West as measured between a found USGS brass cap at the Northwest corner of said Section 6 and a found 1" rebar at the Northeast corner of said Section 6.)

Commencing at a found USGS brass cap at the Northwest corner of said Section 6;

Thence, South 00°24'19" West, along the west line of said Section 6, a distance of 500.00 feet;

Thence South 89°36'53" East, a distance of 362.76 feet to the TRUE POINT OF BEGINNING;

Thence continuing, South 89°36'53" East, a distance of 1022.95 feet to the westerly abandoned railroad right of way line of the Atchison, Topeka and Santa Fe Railway, also known as the Peavine Trail, as described in Book 4545 Official Records, Page 558, Yavapai County Recorders Office;

Thence South 13°34'50" West, along said westerly abandoned railroad right of way line, a distance of 82.17 feet;

Thence North 89°36'53" West, a distance of 894.07 feet;

Thence along a tangent curve, concave to the southeast, having a radius of 20.00 feet, a central angle of 90°04'21", an arc length of 31.44 feet, a chord bearing of South 45°20'57" West and a chord length of 28.30 feet;

Thence South 00°18'46" West, a distance of 44.96 feet;

Thence North 89°36'53" West, a distance of 90.00 feet;

Thence North 00°18'46" East, a distance of 145.00 feet to the TRUE POINT OF BEGINNING;

Containing 87,017.93 square feet or 2.00 acres more or less.

08/02/18
LE #970-11
970-11 Exhibit 2F.doc

