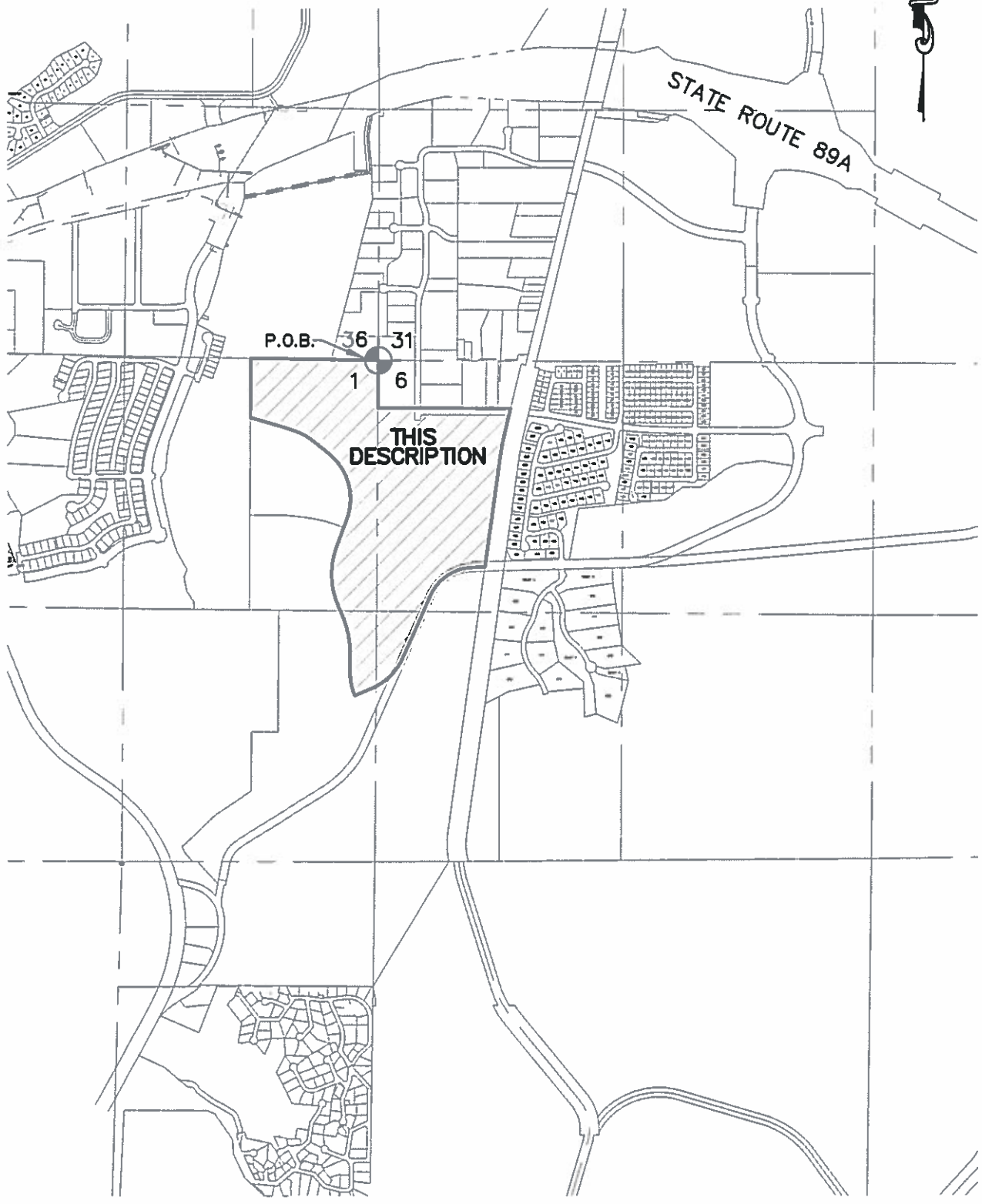


EXHIBIT 2A
MAP TO ACCOMPANY
LEGAL DESCRIPTION



**EXHIBIT 2A
LEGAL DESCRIPTION**

All that portion of land lying within Section 1, Township 14 North, Range 2 West, and Section 6, Township 14 North, Range 1 West, of the Gila and Salt River Base and Meridian, Yavapai County, Arizona, more particularly described as follows:

BEGINNING at the Northeast corner of said Section 1, from whence the north quarter corner of said Section 1 bears North 88° 54' 05" West (Basis of Bearings), a distance of 2684.44 feet;

Thence South 00° 24' 19" West, along the east line of said Section 1, a distance of 500.00 feet;

Thence South 89° 36' 53" East, a distance of 1385.71 feet to a point on the westerly right of way line of the former Atchison, Topeka and Santa Fe Railroad as recorded in Book 4545 of Official Records, Page 558, Yavapai County Recorder's Office, Yavapai County Arizona

Thence South 13° 34' 50" West, along said westerly right of way line, a distance of 246.15 feet;

Thence along a tangent curve, along said westerly right of way line, concave to the east, having a radius of 2963.24 feet, a central angle of 05° 40' 00", an arc length of 293.07 feet, a chord bearing of South 10° 44' 50" West and a chord length of 292.95 feet;

Thence South 07° 54' 50" West, along said westerly right of way line, a distance of 1153.90 feet;

Thence South 88° 41' 49" West, a distance of 134.86 feet;

Thence along a tangent curve, concave to the southeast, having a radius of 479.47 feet, a central angle of 64° 48' 00", an arc length of 542.27 feet, a chord bearing of South 56° 17' 49" West and a chord length of 513.82 feet;

Thence South 23° 53' 49" West, a distance of 738.03 feet;

Thence along a tangent curve, concave to the northwest, having a radius of 600.00 feet, a central angle of 43° 03' 24", an arc length of 450.89 feet, a chord bearing of South 45° 25' 31" West and a chord length of 440.35 feet;

Thence South 66° 57' 13" West, a distance of 201.21 feet;

Thence along a non-tangent curve, concave to the northeast, having a radius of 600.00 feet, a central angle of 23° 06' 29", an arc length of 241.99 feet, a chord bearing of North 11° 29' 33" West and a chord length of 240.35 feet;

Thence North 00° 03' 41" East, a distance of 211.18 feet;

Thence along a tangent curve, concave to the southwest, having a radius of 1000.00 feet, a central angle of 23° 31' 27", an arc length of 410.58 feet, a chord bearing of North 11° 42' 02" West and a chord length of 407.70 feet;

Thence North 23° 27' 46" West, a distance of 122.02 feet;

Thence along a tangent curve, concave to the northeast, having a radius of 800.00 feet, a central angle of 44° 00' 04", an arc length of 614.37 feet, a chord bearing of North 01° 27' 44" West and a chord length of 599.38 feet;

Thence North 20° 32' 18" East, a distance of 326.91 feet;

Thence along a tangent curve, concave to the southwest, having a radius of 600.00 feet, a central angle of 72° 00' 29", an arc length of 754.07 feet, a chord bearing of North 15° 27' 57" West and a chord length of 705.41 feet;

Thence North 51° 28' 11" West, a distance of 236.02 feet;

Thence along a tangent curve, concave to the southwest, having a radius of 600.00 feet, a central angle of 21° 21' 36", an arc length of 223.68 feet, a chord bearing of North 62° 08' 59" West and a chord length of 222.39 feet;

Thence North 72° 49' 47" West, a distance of 468.42 feet;

Thence North 00° 20' 28" East, a distance of 623.56 feet to a point on the north line of said Section 1;

Thence South 88° 54' 05" East, along said north line, a distance of 1342.22 feet to the POINT OF BEGINNING.

Containing 4,640,531.06 square feet or 106.53 Acres, more or less.

08/02/18
LE #970-11
970-11 Exhibit 2A.doc



EXPIRES 6/30/19