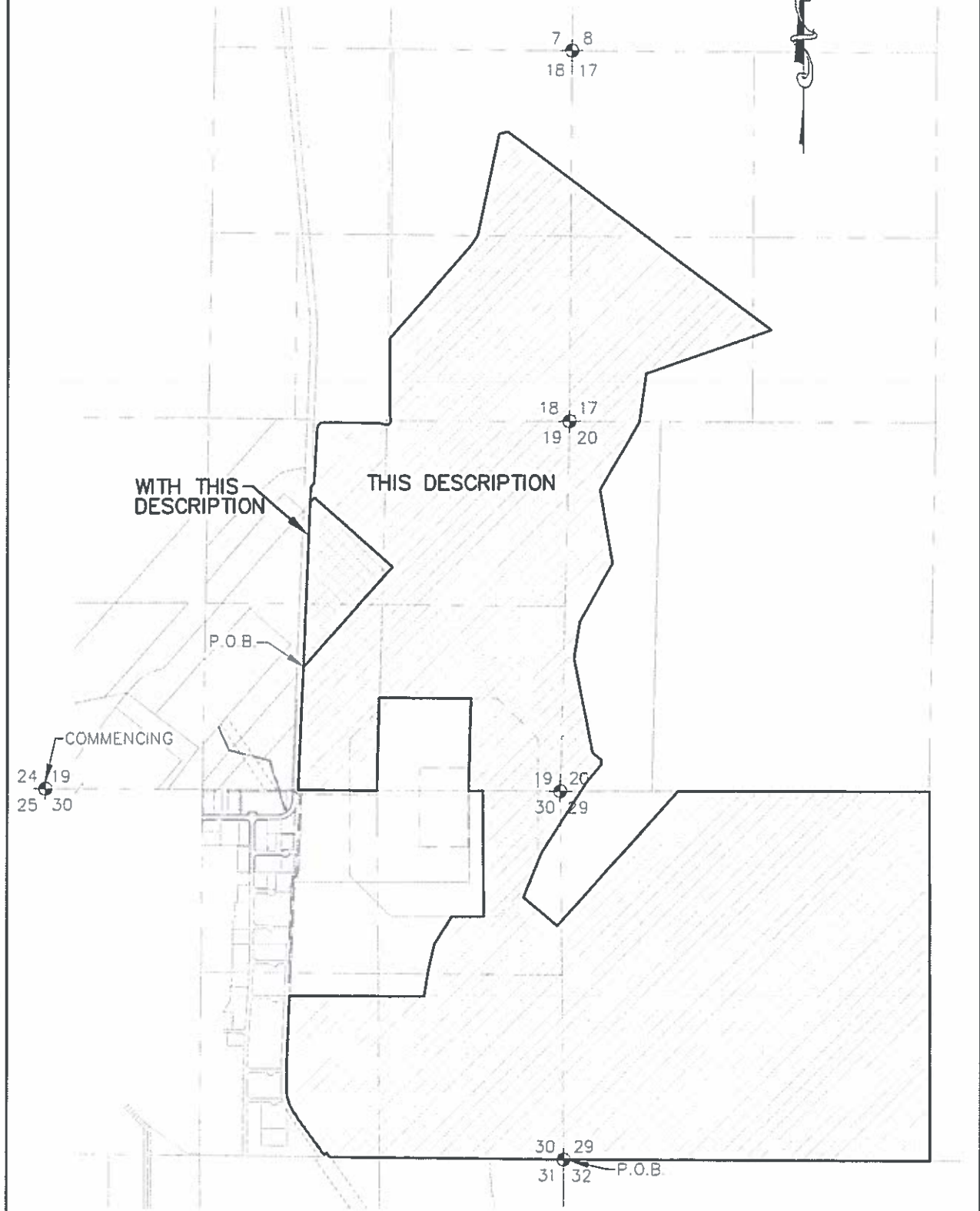


MAP TO ACCOMPANY  
LEGAL DESCRIPTION



### Legal Description

All that portion of land lying within Sections 17, 18, 19, 20, 29 and 30, Township 15 North, Range 1 West, of the Gila and Salt River Base and Meridian, Yavapai County, Arizona, more particularly described as follows:

BEGINNING at the Southeast corner of said Section 30;

Thence, North 89° 21' 39" West, along the south line of said Section 30, a distance of 2655.82 feet to the south quarter corner of said Section 30;

Thence continuing North 89° 21' 39" West, a distance of 702.50 feet to a point on the easterly abandoned railroad right of way line of the Atchison, Topeka and Santa Fe Railway, also known as the Peavine Trail, as described in Book 4545 Official Records, Page 558, Yavapai County Recorder's Office;

Thence North 35° 19' 36" West, along said right of way line, a distance of 73.54 feet;

Thence South 54° 40' 24" West, along said right of way line, a distance of 50.01 feet;

Thence North 36° 13' 07" West, along said right of way line, a distance of 667.45 feet;

Thence along a tangent curve, along said right of way line, concave to the northeast, having a radius of 902.58 feet, a central angle of 22° 45' 05", an arc length of 358.40 feet, a chord bearing of North 24° 50' 34" West and a chord length of 356.05 feet;

Thence North 00° 07' 06" West, along said right of way line, a distance of 437.15 feet;

Thence North 02° 22' 07" East, along said right of way line, a distance of 985.35 feet;

Thence South 89° 35' 07" East, a distance of 1930.17 feet;

Thence North 09° 12' 56" East, a distance of 400.89 feet;

Thence North 13° 18' 52" East, a distance of 364.81 feet;

Thence North 31° 49' 01" East, a distance of 471.07 feet;

Thence North 90° 00' 00" East, a distance of 460.00 feet;

Thence North 00° 30' 38" West, a distance of 1806.95 feet to a point on the north line of said Section 30;

Thence North 89° 45' 07" West, along said north line, a distance of 200.02 feet;

Thence North 01° 25' 17" East, a distance of 1333.83 feet;

Thence North  $89^{\circ} 37' 34''$  West, a distance of 1317.89 feet;

Thence South  $01^{\circ} 30' 00''$  West, a distance of 1336.77 feet to the common quarter corner of said Sections 19 and 30;

Thence North  $89^{\circ} 34' 59''$  West, along the north line of said Section 30, a distance of 1128.53 feet to a point on said easterly abandoned railroad right of way line of the Atchison, Topeka and Santa Fe Railway, also known as the Peavine Trail;

Thence North  $02^{\circ} 21' 38''$  East, along said right of way line, a distance of 1767.68 feet;

Thence North  $41^{\circ} 34' 01''$  East, a distance of 1930.33 feet;

Thence North  $48^{\circ} 25' 53''$  West, a distance of 1499.98 feet;

Thence South  $41^{\circ} 34' 46''$  West, a distance of 91.18 feet to a point on said easterly abandoned railroad right of way line of the Atchison, Topeka and Santa Fe Railway, also known as the Peavine Trail;

Thence North  $02^{\circ} 23' 25''$  East, along said right of way line, a distance of 221.41 feet to the easterly line of that certain parcel as described in Book 4820 of Official Records, Page 414, Yavapai County Recorder's Office;

Thence North  $46^{\circ} 50' 57''$  East, along said easterly line, a distance of 20.43 feet;

Thence along a tangent curve, along said easterly line, concave to the northwest, having a radius of 110.00 feet, a central angle of  $43^{\circ} 36' 45''$ , an arc length of 83.73 feet, a chord bearing of North  $25^{\circ} 02' 34''$  East and a chord length of 81.72 feet;

Thence North  $03^{\circ} 14' 10''$  East, along said easterly line, a distance of 748.73 feet;

Thence along a tangent curve, along said easterly line, concave to the southeast, having a radius of 100.00 feet, a central angle of  $87^{\circ} 42' 19''$ , an arc length of 153.07 feet, a chord bearing of North  $47^{\circ} 05' 19''$  East and a chord length of 138.56 feet;

Thence South  $89^{\circ} 03' 31''$  East, along said easterly line, a distance of 788.79 feet;

Thence along a tangent curve, along said easterly line, concave to the south, having a radius of 65.00 feet, a central angle of  $14^{\circ} 03' 29''$ , an arc length of 15.95 feet, a chord bearing of South  $82^{\circ} 01' 47''$  East and a chord length of 15.91 feet;

Thence South  $75^{\circ} 00' 02''$  East, along said easterly line, a distance of 72.23 feet;

Thence along a tangent curve, along said easterly line, concave to the northwest, having a radius of 65.00 feet, a central angle of  $117^{\circ} 57' 41''$ , an arc length of 133.82 feet, a chord bearing of North  $46^{\circ} 01' 07''$  East and a chord length of 111.41 feet;

Thence North 12° 57' 43" West, along said easterly line, a distance of 76.54 feet;

Thence along a tangent curve, along said easterly line, concave to the northeast, having a radius of 65.00 feet, a central angle of 13° 29' 55", an arc length of 15.31 feet, a chord bearing of North 06° 12' 46" West and a chord length of 15.28 feet;

Thence North 00° 32' 12" East, along said easterly line, a distance of 1078.24 feet;

Thence North 41° 00' 56" East, a distance of 1698.97 feet;

Thence along a non-tangent curve, concave to the northwest, having a radius of 990.00 feet, a central angle of 14° 00' 32", an arc length of 242.05 feet, a chord bearing of North 35° 26' 19" East and a chord length of 241.45 feet;

Thence North 12° 08' 42" East, a distance of 1488.99 feet;

Thence North 74° 59' 32" East, a distance of 125.19 feet;

Thence South 53° 04' 43" East, a distance of 4748.60 feet;

Thence South 70° 46' 29" West, a distance of 1901.08 feet;

Thence South 07° 58' 10" West, a distance of 708.00 feet;

Thence South 30° 17' 00" West, a distance of 1127.07 feet;

Thence South 09° 46' 36" East, a distance of 1072.84 feet;

Thence South 29° 38' 23" West, a distance of 967.25 feet;

Thence South 08° 56' 49" West, a distance of 532.99 feet;

Thence South 11° 21' 13" East, a distance of 1384.77 feet;

Thence South 50° 58' 32" East, a distance of 166.18 feet;

Thence South 00° 25' 37" West, a distance of 63.50 feet;

Thence South 40° 59' 38" West, a distance of 329.12 feet;

Thence South 32° 29' 22" West, a distance of 1211.84 feet;

Thence South 22° 12' 19" West, a distance of 691.70 feet;

Thence South 49° 47' 25" East, a distance of 637.69 feet;

Thence North 42° 04' 56" East, a distance of 2608.46 feet to a point on the north line of said Section 29;

Thence South 89° 52' 51" East, along said north line, a distance of 3601.02 feet to the northeast corner of said Section 29;

Thence South 00° 11' 16" East, along the east line of said Section 29, a distance of 5310.24 feet to the southeast corner of said Section 29;

Thence North 89° 40' 09" West, along the south line of said Section 29, a distance of 5267.20 feet to the POINT OF BEGINNING.

Containing 70,635,719.98 square feet or 1,621.57 Acres, more or less.

TOGETHER WITH All that portion of land lying within Section 19, Township 15 North, Range 1 West, of the Gila and Salt River Base and Meridian, Yavapai County, Arizona, more particularly described as follows:

COMMENCING at a found ½ rebar at the southwest corner of said Section 19;

Thence South 89° 34' 59" East, along the south line of said Section 19, a distance of 1399.60 feet;

Thence North 02° 21' 38" East, a distance of 1767.68 feet to the TRUE POINT OF BEGINNING;

Thence North 02° 22' 01" East, a distance of 2373.32 feet;

Thence North 41° 34' 46" East, a distance of 91.18 feet;

Thence South 48° 25' 53" East, a distance of 1499.98 feet;

Thence South 41° 34' 01" West, a distance of 1930.33 feet to the TRUE POINT OF BEGINNING

Containing 1,516,136.28 square feet or 34.81 Acres, more or less.

Total Area containing 72,151,856.26 square feet or 1,656.38 Acres, more or less.

07/26/18  
LE #970-11  
970-11 Annex Overall North.doc

JASON O'BRIEN, R.L.S.

